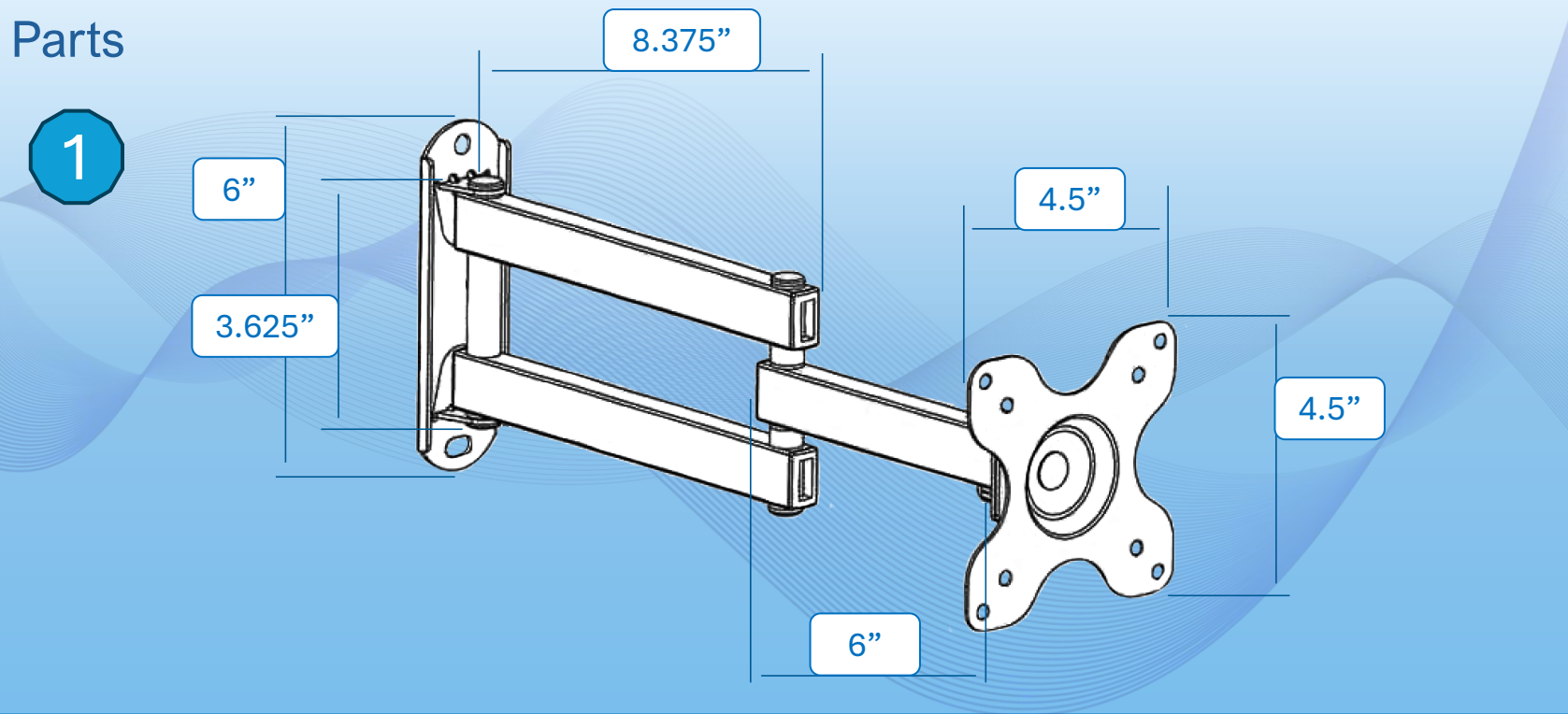


# Articulating Arm Mount

## Installation



### Descriptions

1 – Arm Mount Dimensions

### Instructions

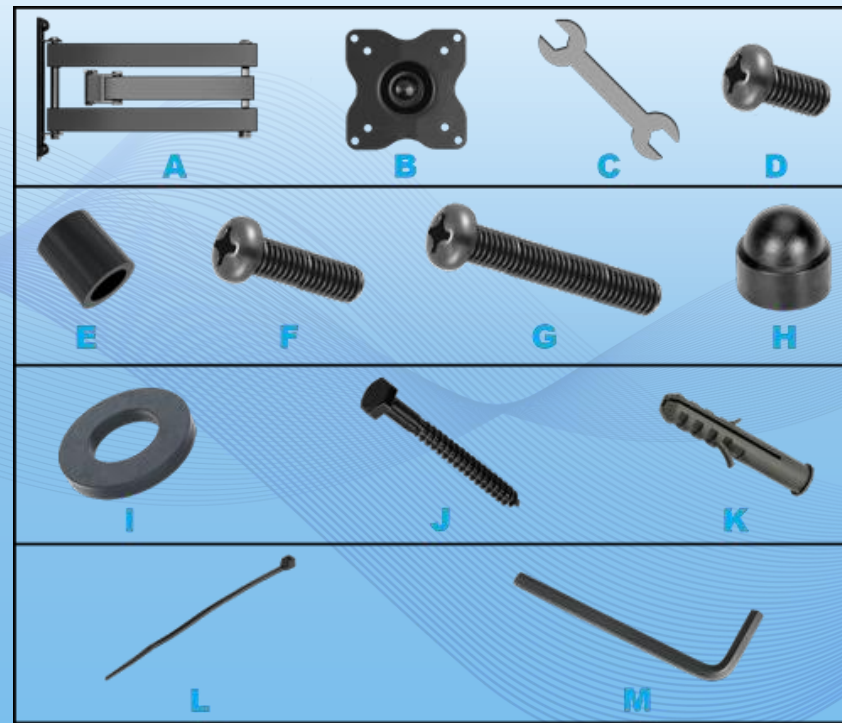
- Wall Plate Bracket – 6” (L)
- Wall Arm – 8.375” (L)
- Tablet Arm – 6” (L)
- VESA Mount – 4.5” (W) x 4.5” (H)

# Articulating Arm Mount

## Installation

### Parts

1



### Descriptions

1 – Parts Included with the Mount

### Instructions

- |                                 |                                 |
|---------------------------------|---------------------------------|
| <b>A</b> – Articulating Arm (1) | <b>H</b> – Bolt Cover (2)       |
| <b>B</b> – VERSA Plate (1)      | <b>I</b> – Lag Bolt Washer (2)  |
| <b>C</b> – Open End Wrench (1)  | <b>J</b> – Lag Bolt (2)         |
| <b>D</b> – M4 x 6 Bolt (2)      | <b>K</b> – Concrete Anchor (2)  |
| <b>E</b> – M4 Spacer (4)        | <b>L</b> – Cable Tie (3)        |
| <b>F</b> – M4 x 12 Bolt (4)     | <b>M</b> – Allen Key/Wrench (1) |
| <b>G</b> – M4 x 30 Bolt (4)     |                                 |

# Articulating Arm Mount

## Installation

### Parts

1



2



### Descriptions

1 – Shipping Box

NOTE: Box cover may differ from image shown.

2 – All Parts Unpacked

### Instructions

- Open the shipping box and unpack all items.
- The items unpacked should be like what is shown above.
- If anything is missing, contact VersaCall Support for assistance.

Articulating Arm  
Mount

Installation  
Masonry

Parts

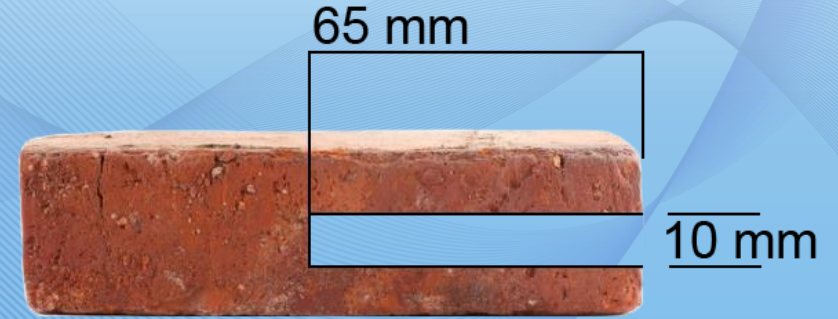
1



2



3



**Descriptions**

- 1 – Drill (Cordless or Powered)
- 2 – 10mm Masonry Drill Bit
- 3 – Side View of Hole & Depth

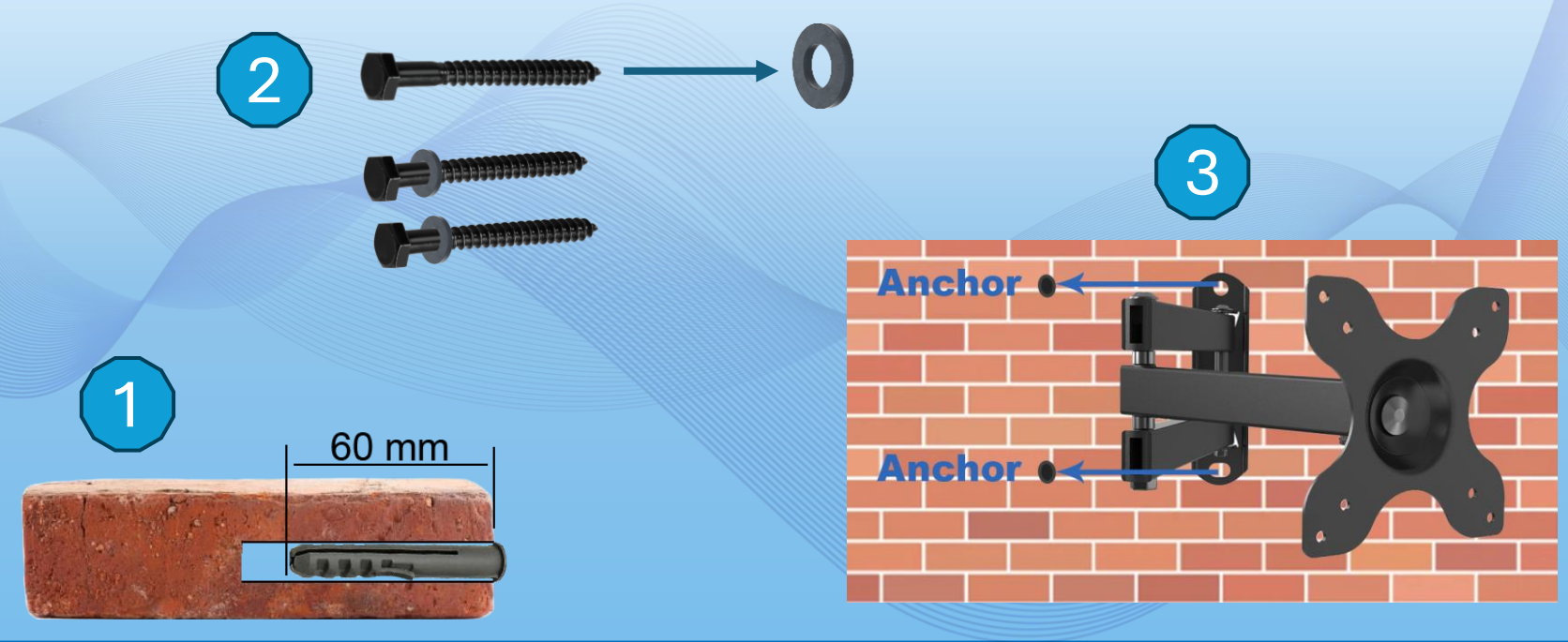
**Instructions**

- Mark the 2 holes needed for the bracket.
- Using a Drill with a 10mm Masonry Drill Bit, drill the holes to a depth of 65mm

# Articulating Arm Mount

## Installation Masonry

### Parts



### Descriptions

- 1 – Hole with Anchor – Side View
- 2 – Lag Bolt Assembly
- 3 - Arm Installation - Hole Alignment

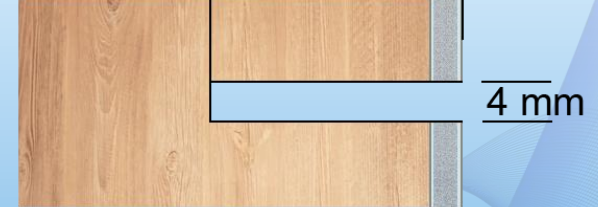
### Instructions

- Insert the Concrete Anchor into the holes that were drilled for the Arm Mount.
- Prepare 2 Lag Bolts with Washers.
- Place Mount on the Brick surface and line up the holes with the opening on the bracket.
- Insert the Lag Bolts w/Washers through the Arm Mount Holes.
- Screw the Lag Bolt into the Concrete Anchor until tight.

# Articulating Arm Mount

## Installation Wood (Wall Stud)

### Parts



### Descriptions

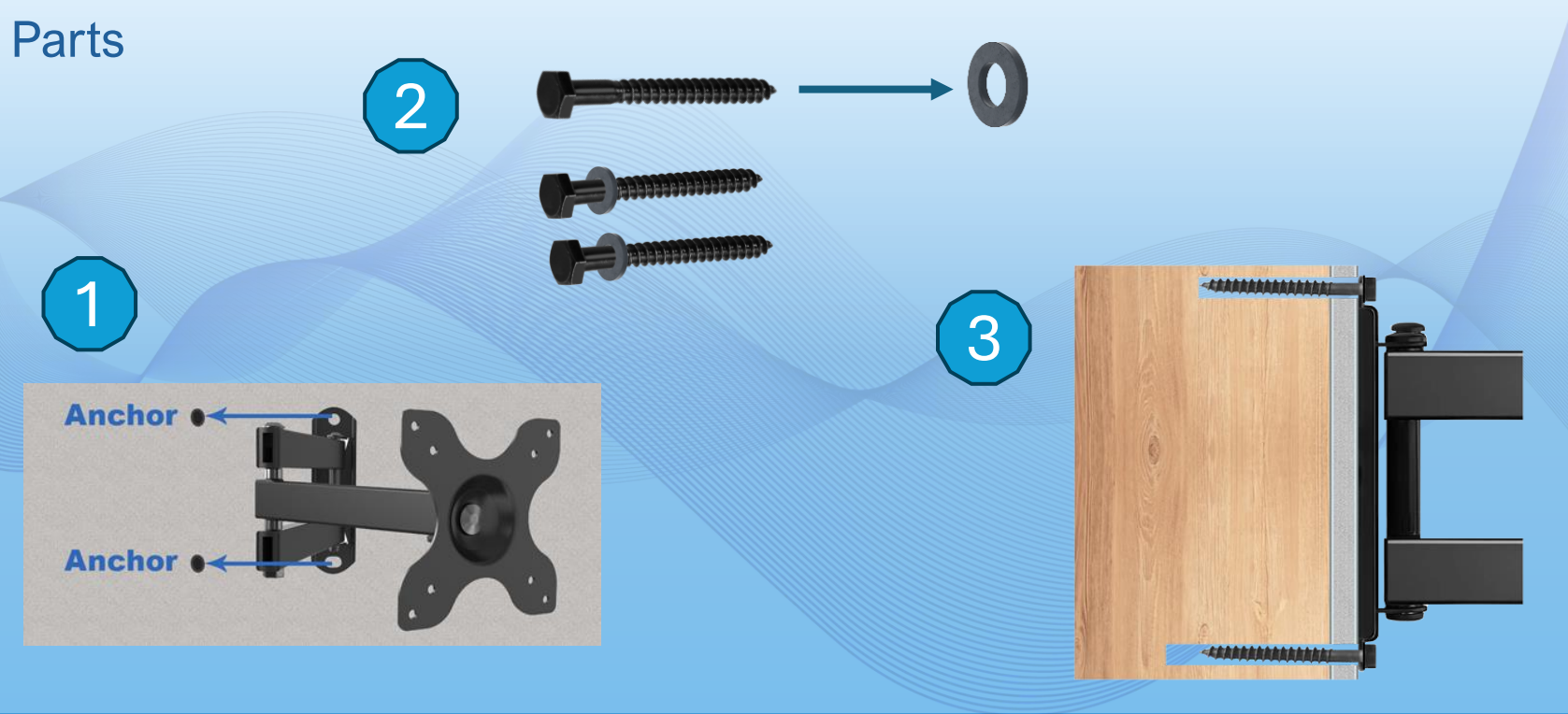
- 1 – Drill (Cordless or Powered)
- 2 – 4mm Drill Bit
- 3 – Side View of Hole & Depth (Wall Stud)
- 4 – Side View of Hole & Depth (Wood)

### Instructions

- Mark the 2 holes needed for the bracket.
- Using a Drill with a 4mm, drill the holes to a depth of 65mm.
  - Ensure that you compensate for any sheetrock or wall board covering.

# Articulating Arm Mount

## Installation Wood (Wall Stud)



### Descriptions

- 1 – Arm Installation - Hole Alignment
- 2 – Lag Bolt Assembly
- 3 - Side View Wall

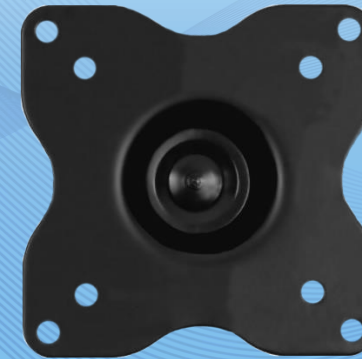
### Instructions

- Prepare 2 Lag Bolts with Washers.
- Place Mount on the Wall and line up the holes with the openings on the bracket.
- Insert the Lag Bolts w/Washers through the Arm Mount and into the Holes.
- Screw the Lag Bolt into the Wall until tight.

# Articulating Arm Mount

## Installation

### Parts



### Descriptions

- 1 – VersaCall Tablet
- 2 – VESA Mount
- 3 - M4 x 12 Screws (4)

### Instructions

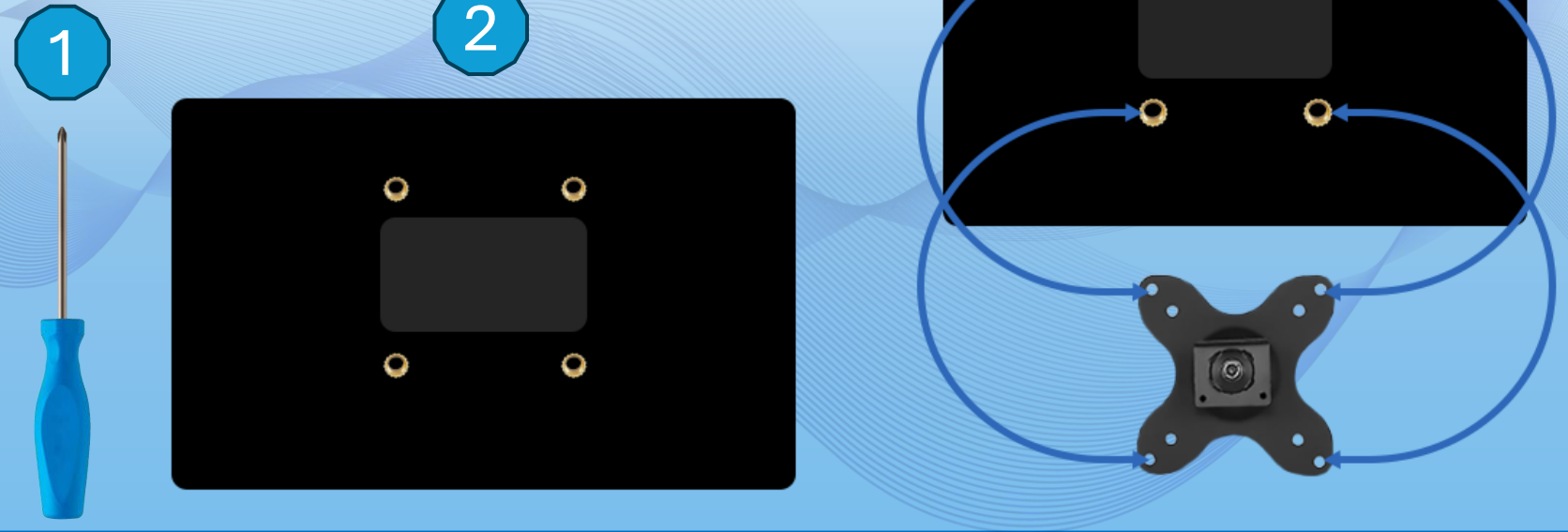
- Unpack the Touch Screen.
- Unpack/Detach the VESA Mount from the articulating arm.
- Unpack the M4 x 12mm Screws (4).



# Articulating Arm Mount

## Installation

### Parts



### Descriptions

- 1 – Phillips Head Screwdriver
- 2 – Touch Screen
- 3 – VESA Mount Hole Alignment

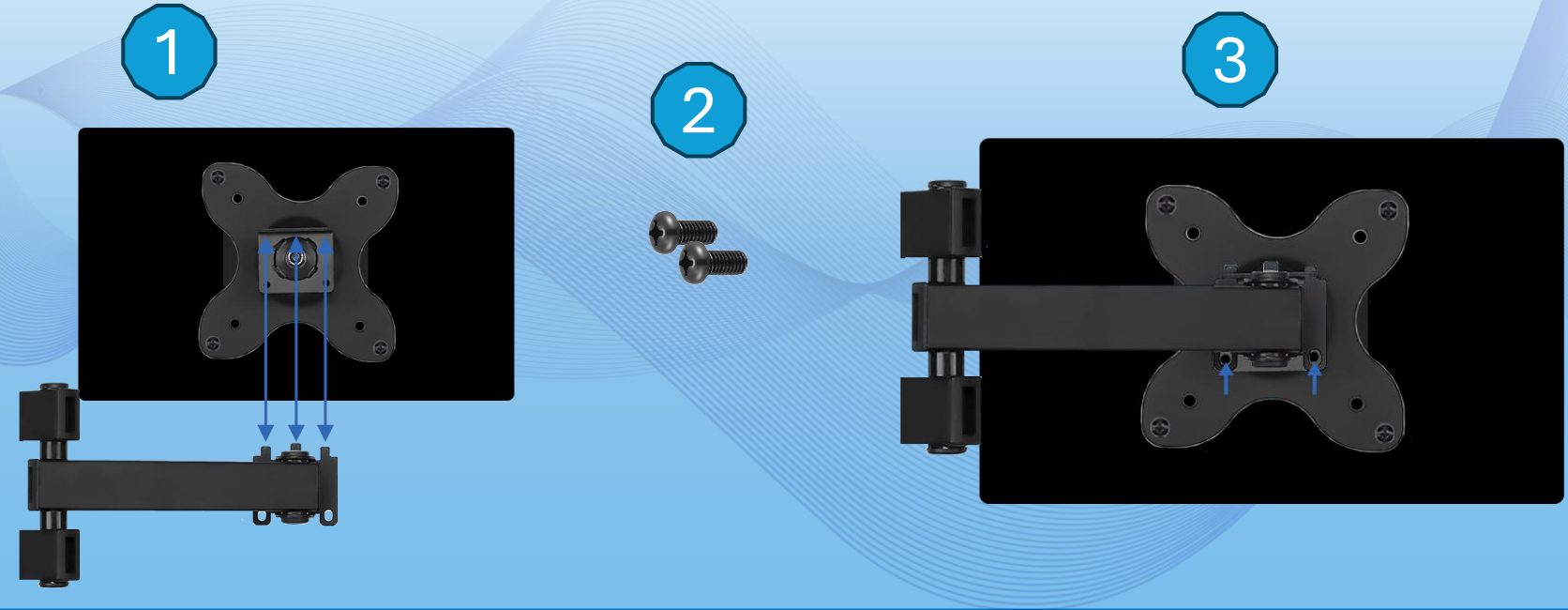
### Instructions

- Have a Phillips Head Screwdriver available for install.
- Flip the VersaCall Touch Screen over so that the back is showing.
- Line up the VESA Mount holes with the holes on the back of the Touch Screen.

# Articulating Arm Mount

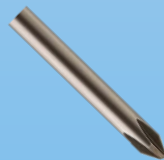
## Installation

### Parts



### Descriptions

- 1 – VESA Mount to Arm Alignment
- 2 – M4 x 6mm Screws (2)
- 3 – Screw Location

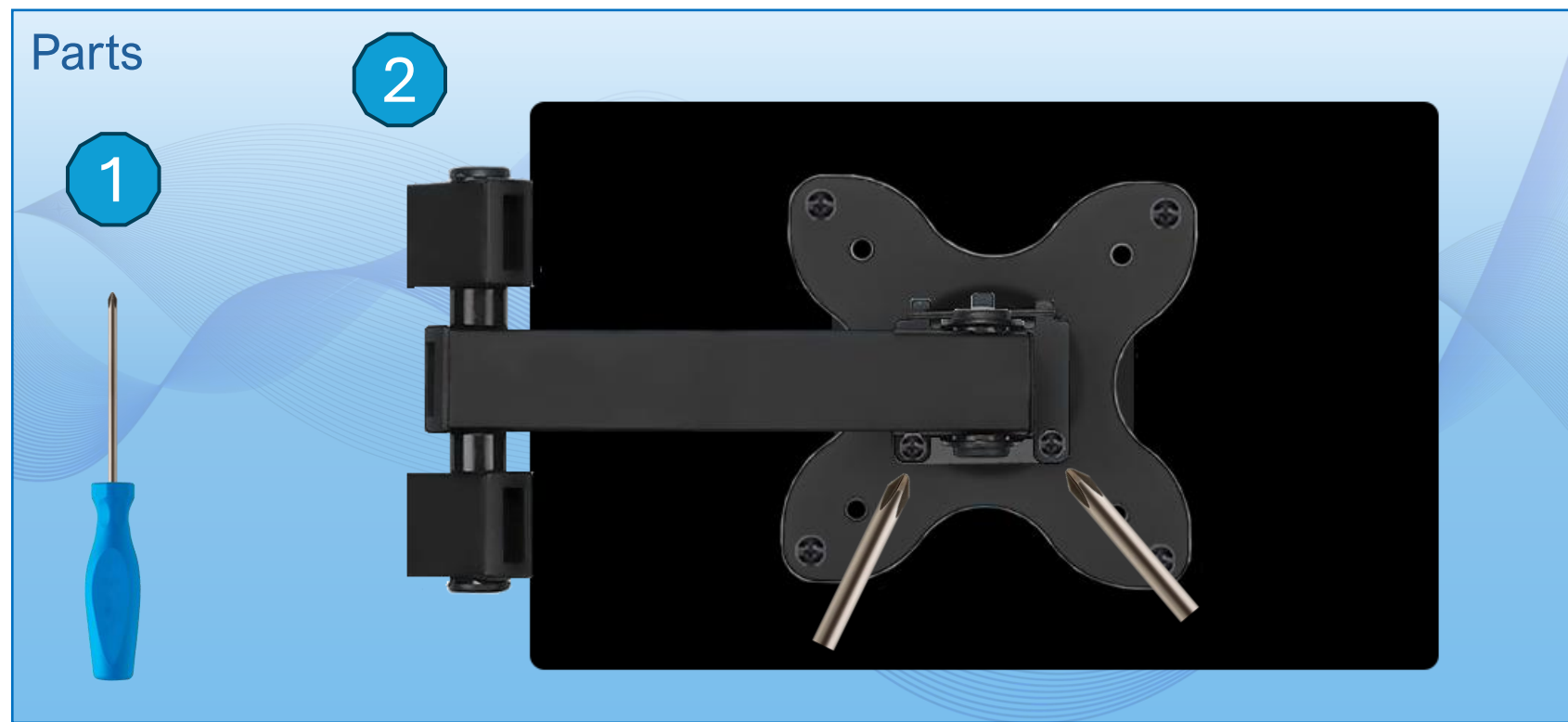


### Instructions

- Hook the VESA Mount to the Arm using the Slot and Pins.
  - The VESA Mount will need to be angled up to fit onto the Arm.
- The small holes on the VESA Mount will line up with the holes on the Arm.
- Hand tighten the M4 x 6mm screws.

# Articulating Arm Mount

## Installation



### Descriptions

- 1 – Phillips Head Screwdriver
- 2 - VESA Mount Securement

### Instructions

- Using a Phillips Head Screwdriver, tighten the M4 x 6mm screws.
- Test to ensure the Tablet moves properly on the Arm and is secured properly.